



Superior handling & storage solutions

# Alto 1400

## THE LARGEST BOX PALLET IN THE AGRO MARKET



Size: 1300L x 1150W x 1250H



Robust and Strong for Heavy Duty Demands



Taking your Process to a Higher Level



## The Next Big Thing is Here!

DOLAV developed the next level large-volume foam-injection HDPE box-pallet specially designed for transportation and storage of agricultural produce.

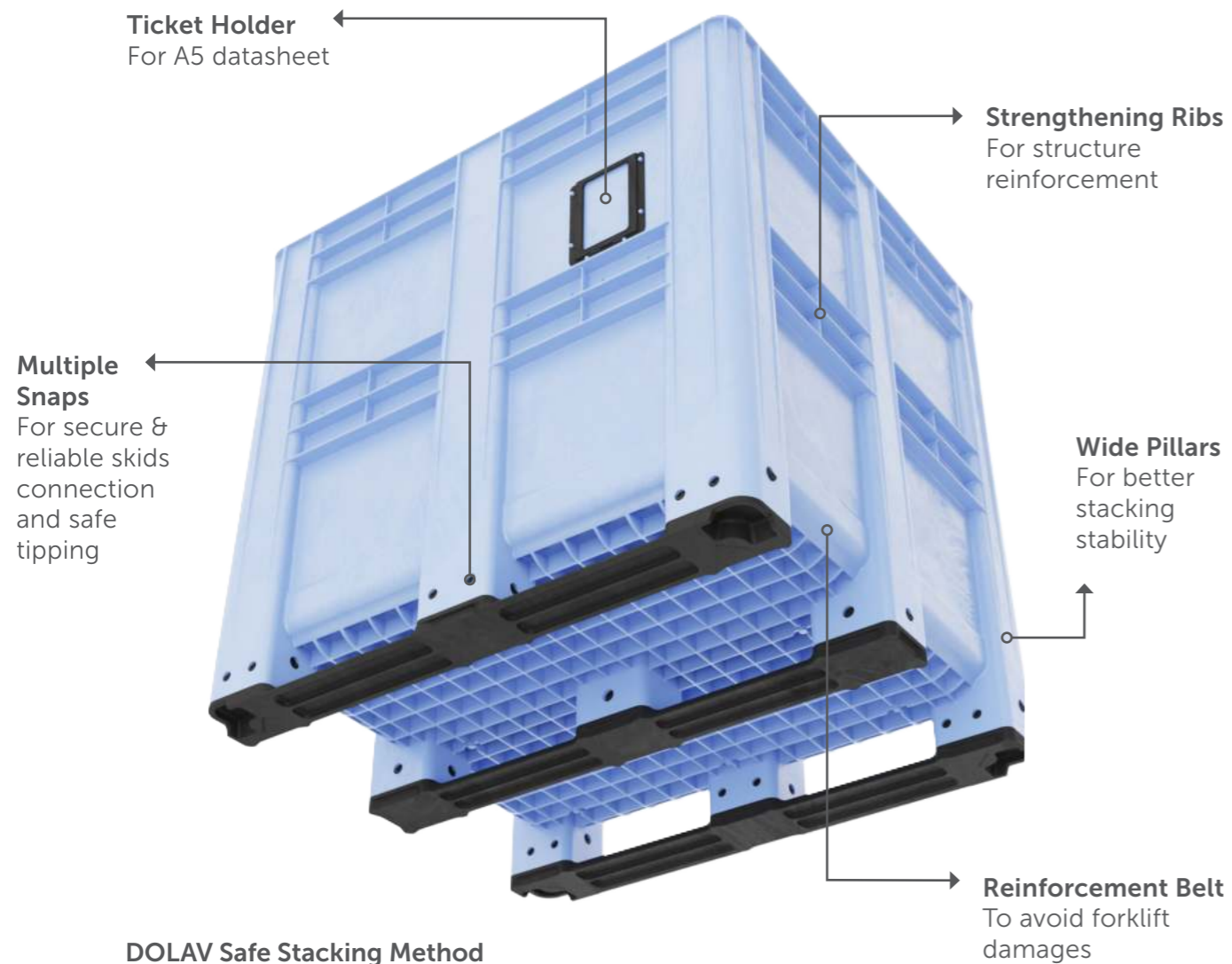
The new Dolav 1400 Alto meets the need of agricultural food producers for a heavy duty solution for harvesting and storing vegetables, potatoes and fruits.

This large volume hygienic and durable box pallet is made of food safe HDPE which provides you with the strongest long term solution for your daily practice.

### Robust and Long Lasting

### High Impact Resistance

### Hygienic Design



### DOLAV Safe Stacking Method



## The Best Solution for the Agricultural & Food Industry

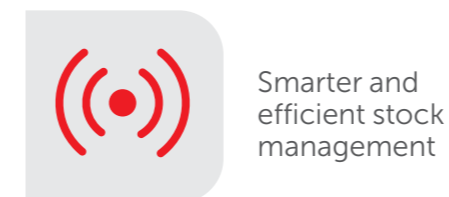
- Manufactured of food safe material
- Hygienic design
- Easy to handle and clean
- Safe to stack up to 8 high
- Suitable for use in extreme temperatures (range -40° C to +60° C)

## Available Options

### Colour



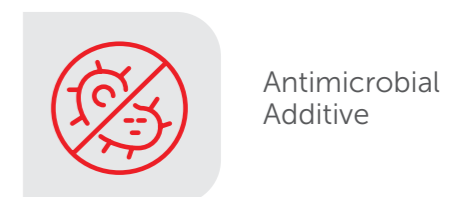
### RFID



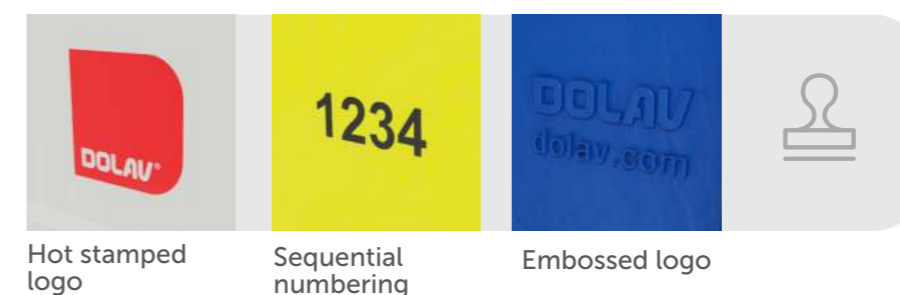
### DM



### AM

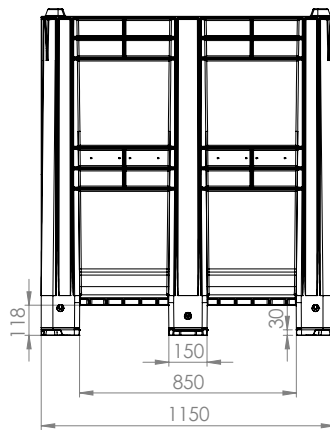
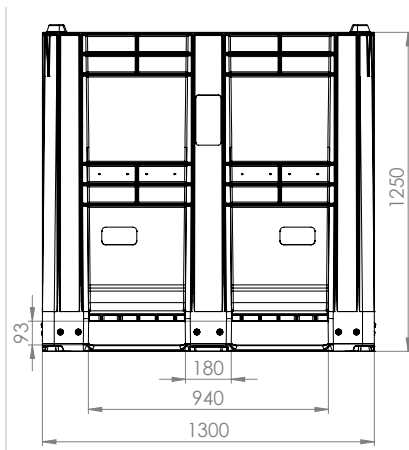


### Logo options



Your company name, logo and sequential numbers can be hot stamped onto the Dolav for easy identification.

## Technical Data



Compatible with  
Alto 1400 Lid



|                                     | Alto 1400 (Perforated/Solid version)  |
|-------------------------------------|---|
| External dimensions (LxWxH) mm      | 1300x1150x1250  |
| Internal dimensions (LxWxH) mm      | 1230x1090x1080  |
| Volume (liter)                      | 1400  |
| Tare weight (kg)                    | 75 (Solid version with 3 runners)<br>72.5 (Perforated version with 3 runners) |
| Max load (kg)                       | 1000  |
| Max stack load (kg)                 | 8000  |
| Raw material                        | HDPE Structural Foam  |
| Quantity in Semi-trailer 13.6m      | 40 Boxes  |
| Quantity in container (units) 40'HC | 36 Boxes  |

- Due to deviations in the manufacturing process, tare weight may vary by  $\pm 1.5\%$
- Dimensions may vary by  $\pm 1\%$ .
- Data refers to temperature of 23°C.
- Maximum load refers to stand alone boxes.
- Maximum stacking load refers to vertical loading when the load per single box pallet does not exceed 750 kg.
- Also available with combination: solid walls and perforated base or perforated walls and solid base - minimum order quantity applies.
- Available with 9 feet - for this option please contact us.

**DOLAV®**

**Tried. Trusted. Best.**



Dolav Plastic Products, Kibbutz Dvir M.P. HaNegev 8533000

☎ 972-72-2450700 📠 972-8-9918710 ✉ dolav@dolav.com 🌐 www.dolav.com

Worldwide offices: Benelux, China, France, Germany, Hong Kong, Ireland, Israel, Italy, Russia, Spain, UK, USA

